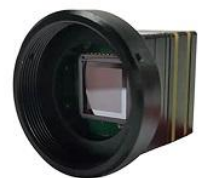


S3817SLS/S6412SLS
Amorphous Silicon
No Shutter
Smaller Size
Thermal Imaging Module
Technical Data



Suzhou Grand Sensor Inc.

Items	Technical Specification	
Type		S3817SLS S6412SLS
Detector characteristic	Detector	Uncooled amorphous silicon FPA
	Array format/Pixel pitch	384×288 / 17um 640x480/12um
	NETD	≤60mk@300K, 50HZ
	Frame rate	50Hz
	Spectral range	8~14um
Image processing	Non-uniformity calibration	No shutter technology
	Boot time	< 5s
	Noise reduction	Digital filter
	Image definition	768×576
	Image frame rate	50Hz (PAL) /60Hz (NTSC) (Optional)
Thermal imaging adjustment	Palette	Black/white hot, iron, rain bow 9 palettes
	Mirror image	Horizontal/Vertical
	Image zoom	×2, ×3,×4 or continuous zoom(step 0.1), optional
	Contrast adjustment	Auto/manual
	Brightness adjustment	Auto/manual
	Digital detail enhancement	Auto/manual
	Picture-in-picture	yes
	Cross cursor	Show/hide/shift
Power	Working voltage range	DC: +2.5V~+5.5V
	Typical working voltage	DC: 3.6V
	Power protection	Over-voltage/under-voltage/reverse-voltage protection
	Power consumption	≤1.2W ≤1.3W
	Working temperature range	-40°C~+60°C
	Storage temperature range	-45°C~+65°C
	Humidity	5%~95% Non-condensing
	Vibration&shock	Vibration: GJB 150-16 2.3.1
		Shock: 400G 0.1ms
Anti temperature impact	-5°C/min (-40°C~+60°C)	
Physical parameter	Weight	< 32g
	Dimension (No lens and back cover)	28mm×28mm×24mm
Interface	Power port	Yes
	Serial port	RS-232
	Analog video	BNC(75Ω)
	Digital video output	RGB888
	Keyboard	4 buttons keyboard