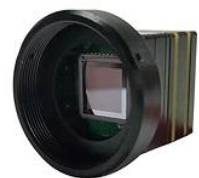


S1212SLS
Amorphous Silicon
No Shutter
Smaller Size
Thermal Imaging Module
Technical Data



Suzhou Grand Sensor Inc.

Items	Technical Specification	
Type		S1212SLS
Detector characteristic	Detector	Uncooled amorphous silicon FPA
	Array format/Pixel pitch	1280x1024 / 12um
	NETD	≤50mk@300K, 25HZ
	Frame rate	25Hz
	Spectral range	8~14um
Image processing	Non-uniformity calibration	No shutter technology
	Boot time	< 15s
	Noise reduction	Digital filter
	Image definition	1280x1024
	noise reduction	digital filtering
Thermal imaging adjustment	Palette	Black/white hot, iron, rain bow 9 palettes
	Mirror image	Horizontal/Vertical
	Image zoom	×2, ×4
	automatic gain	Automatic adjustment
	Working voltage range	DC: +2.9V~+6.5V
Power	Typical working voltage	DC: 3.6V
	Power protection	Over-voltage/under-voltage/reverse-voltage protection
	Power consumption	≤3W
	Working temperature range	-40°C~+60°C
	Storage temperature range	-45°C~+65°C
	Humidity	5% ~ 95% Non-condensing
	Vibration&shock	Vibration: GJB 150-16 2.3.1
		Shock: 100G 6ms
Anti temperature impact	-5°C/min (-40°C~+60°C)	
Physical parameter	Weight	< 60g
	Dimension (No lens and back cover)	45mm×45mm×35mm
Interface	Power port	Yes
	Serial port	RS-232
	Digital video output	SDI OR HDMI
	Keyboard	4 buttons keyboard