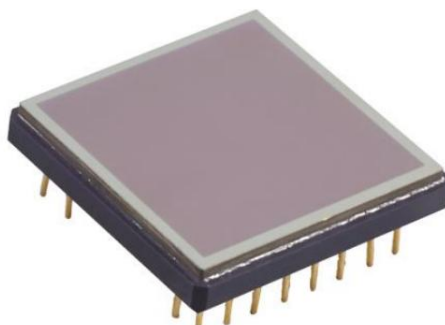


## S0612D1 640x512 Uncooled Thermal Detector



### S0612D1 Vox Detector Technical data

Parameter	S0612D1
Material	VOx
Resolution	640*512
Pixel Pitch	17 $\mu$ m
Typical NETD	< 45mk@F1.0
Spectral range	8~14 $\mu$ m LWIR
Package	Ceramic packaged PGA32
Dimension	22.86mm*22.86mm*3.53mm(without pins)
Digital Output	14 bit AD output
Supply voltage	Digital: 1.8 V, Digital/Analog: 3.6 V, VSK: 7 V
Dynamic Range	1.2V~3.2V
Responsivity	5-20m mV/K, 25 °C
Typical response time	12mS
Dead Pixel Rate	< 0.5%
Weight	< 6.3 $\pm$ 0.1 g
Power consumption	< 150mW@25°C
Frame Rate	50HZ
Operating mode	TEC-less, OOC
Operating temperature	-40°C~85°C